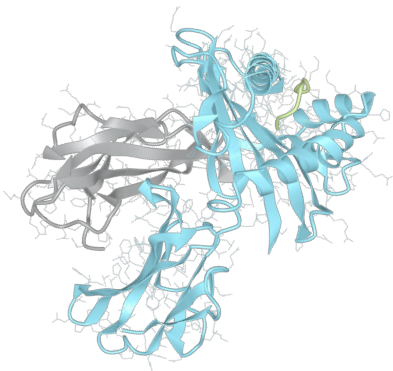


Product datasheet



sHLA-A*66:02bio

A*6602, A6602, A*66, A66, A66

| | |
|-------------------------|------------|
| Serological Name | A66 |
| Peptide Load | Endogenous |
| Modification | Unmodified |
| Conjugation | Biotin |
| SKU | A6602bio |

Product Description

| | |
|--|--|
| Allele Name | A*66:02 B2m |
| HLA Class | HLA Class I |
| HLA Gene Locus | HLA-A |
| Alternative Allele Name A Chain | A*6602, A6602, A*66, A66, A66 |
| Alternative Allele Name B Chain | - |
| Description | Recombinant, truncated Class I soluble Human Leukocyte Antigen (sHLA), naturally folded and glycosylated, loaded with endogenous peptides. |
| Serological Name | A66 |
| Serological Split | A10 |
| Bw4/Bw6 Assignment | - |
| Bw4/Bw6 Sequence | - |
| Allele Frequency [World Population] | |
| A chain | 0.30% |
| B chain | - |

Associated products

[A6602](#)
[A6602pe](#)

Product Specification

| | |
|------------------------------------|--|
| Product name | HLA-A*66:02bio |
| HLA Species | Human |
| Host Cell Line Species | Human |
| Clone Designation | D9 |
| Tail Specification | VLDL |
| Peptide Load | Endogenous |
| Modification | Unmodified |
| Conjugation | Biotin |
| Complexity | Monomer |
| Protein Format | Recombinant, truncated, soluble, non-modified, biotinylated, endogenously loaded |
| Storage Temperature | 4 °C (This product should be stored undiluted) |
| Form | Liquid |
| Concentration | 300.0 µg/µl |
| Formulation | PBS/0.02% Sodium Azide |
| pH | 7.4 |
| Purification Method | Affinity Chromatography |
| Grade | Research Use Only [RUO] |
| Authentication Verification | Sequence Based Typing |

Protein Sequences

| | |
|-----------------------------|---|
| Alpha Chain Sequence | GSHSMRYFYT SVSRPGRGEP RFIAVGYVDD TQFVRFSDSA ASQRMEPRAP WIEQEGPEYW DRNTRNVKAQ SQTDRVDLGT LRGYYNQSEA GSHTIQRMYG CDVGPDGRFL RGYQQDAYDG KDYIALNEDL RSWTAADMAA QITQRKWETA HEAEQWRAYL EGECVEWLRR YLENGKETLQ RTDAPKTHMT HHAVSDHEAT LRCWALSFYP AEITLTWQRD GEDQTQDTEL VETRPAGDGT FQKWASVVVP SGQEQRYTCH VQHEGLPKPL TLRVSVSTDD DLA |
| Beta Chain Sequence | IQRTPKIQVY SRHPAENGKS NFLNCYVSGF HPSDIEVDLL KNGERIEKVE HSDLSFSKDW SFYLLYYTEF TPTEKDEYAC RVNHVTLSPQ KIVKWDRDM |

Related Products

[A6601bio](#)
[A0201bio](#)
[A0301bio](#)
[B0702bio](#)

Applications

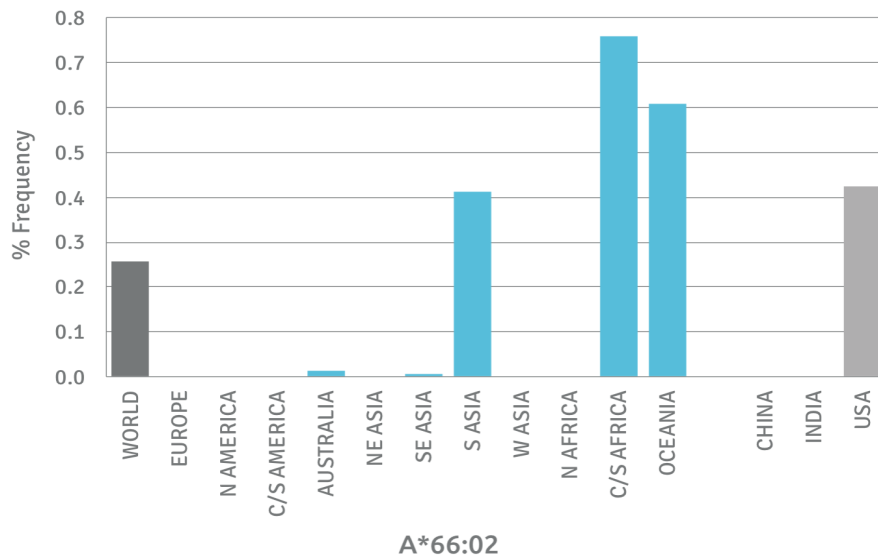
HLA Sandwich ELISAs
 HLA Direct ELISAs
 HLA-Sera Antibody Assays
 HLA Controls in ELISA Assays
 HLA Assay Standards
 HLA Blocking Assays
 HLA Neutralizing Assays
 HLA Competition Assays
 HLA Bead Assays
 HLA Immunization Procedures

Recommended Antibodies

W6/32
 Anti-B2m

Allele Frequency

Worldwide Allele Frequency



Please note:

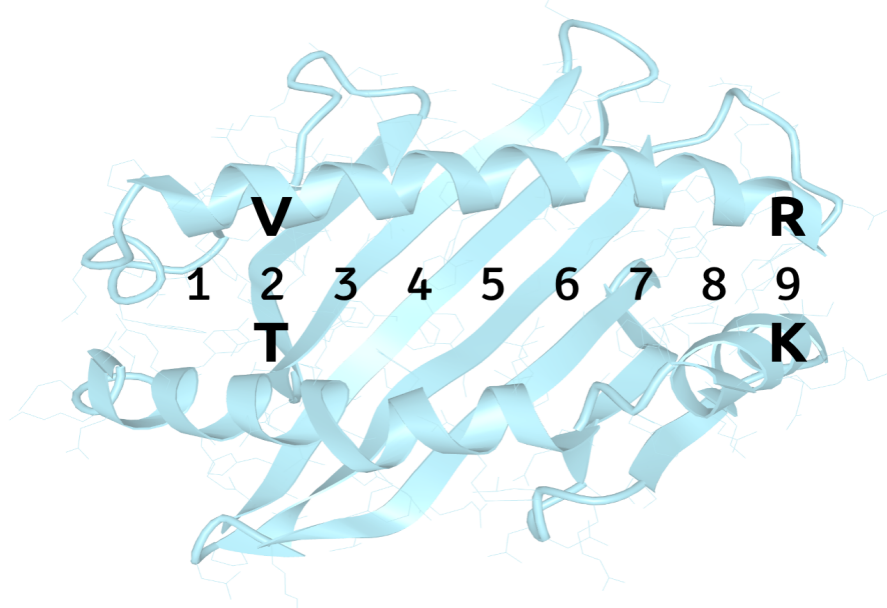
ALL PRODUCTS ARE FOR RESEARCH USE ONLY. NOT FOR COMMERCIAL USE IN DIAGNOSTIC PROCEDURES.
 For more information, please visit our Policies section on our website. For licensing inquiries, please contact

licensing@hlaprotein.com

HLA Protein
 PURE PROTEIN, LLC

Motif

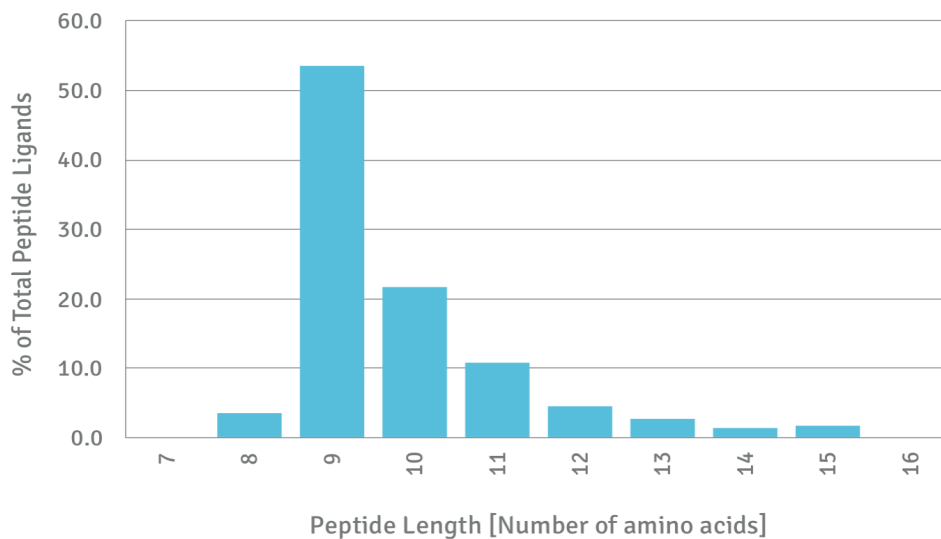
A*66:02 BINDING MOTIF



Length Distribution

HLA Length Distribution

A*66:02



Please note:

ALL PRODUCTS ARE FOR RESEARCH USE ONLY. NOT FOR COMMERCIAL USE IN DIAGNOSTIC PROCEDURES.

For more information, please visit our Policies section on our website. For licensing inquiries, please contact

licensing@hlaprotein.com

